

Setting up and using a passkey

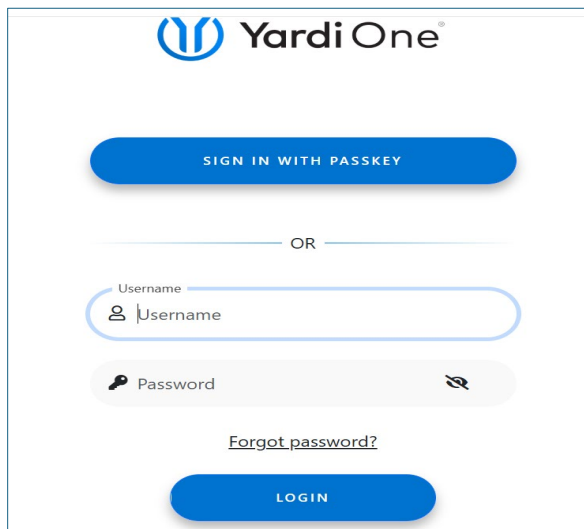
There is a new, OPTIONAL, method for logging in through YardiOne.

To set up a passkey you must have an active account and successfully logged into the system with your username, password, and multi-factor authentication (MFA).

Setting up a passkey

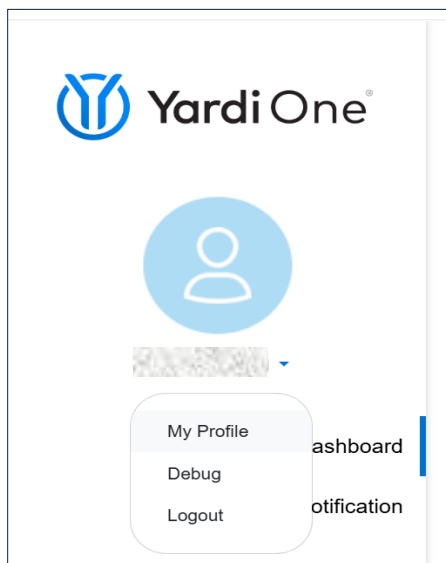
The passkey link is located on hudp260.com > Resources > Help Documents > Passkey Link

Login using your previously created username, password, and MFA. DO NOT click Sign in with passkey.



The screenshot shows the YardiOne login interface. At the top is the YardiOne logo. Below it is a blue button labeled "SIGN IN WITH PASKEY". Underneath is a horizontal line with "OR" in the center. Below that are two input fields: "Username" with a person icon and "Password" with a key icon and a toggle for visibility. A link for "Forgot password?" is located below the password field. At the bottom is a blue "LOGIN" button.

Click the down arrow to the right of your name. Select My Profile.



The screenshot shows the YardiOne user profile dropdown menu. At the top is the YardiOne logo. Below it is a circular profile picture placeholder. Underneath is a dropdown arrow. The dropdown menu is open, showing the following options: "My Profile", "Dashboard", "Debug", and "Logout".

Select Register Passkey

[Register Passkey](#)

YardiOne

My Profile

Email: [Redacted]

Profile Image: [Profile Image Icon]

First Name: [Redacted]

Last Name: [Redacted]

Choose File No file chosen

Dashboard

Notification

[Update Profile](#) [Register Passkey](#) [Change Password](#) [MFA Settings](#) [Mobile Setup](#)

Select where the passkey will be saved.

Note: Always choose iPhone, iPad or Android device unless you have set up a Security key as your MFA option to log into the system.

Windows Security

Choose where to save your passkey

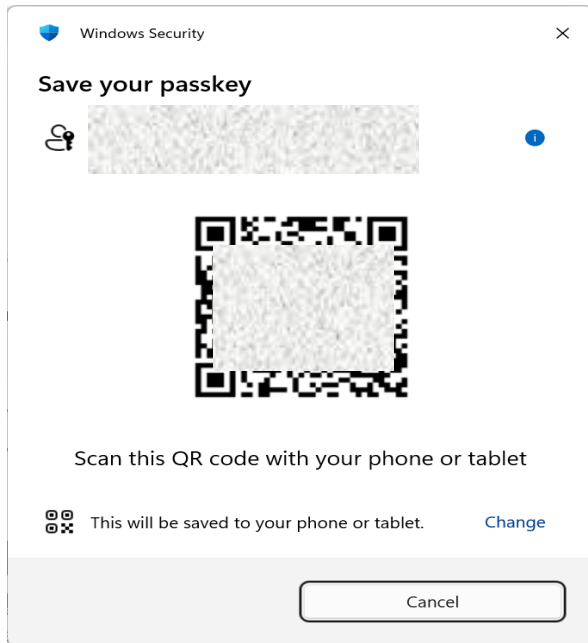
iPhone, iPad, or Android device

Security key

Cancel

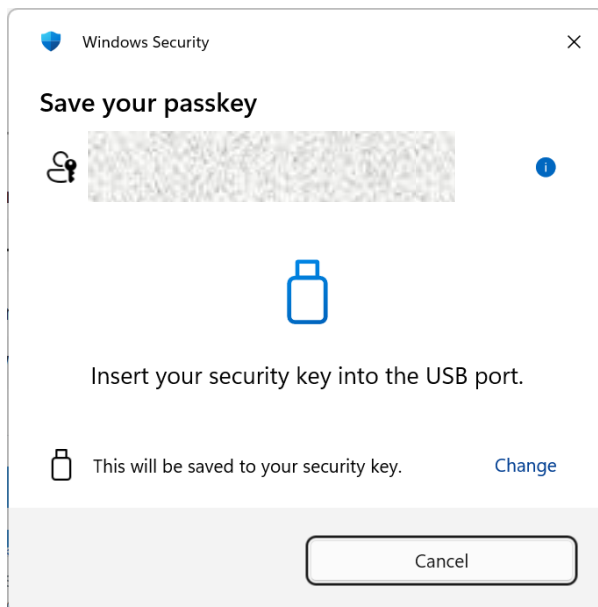
The next steps involve your iPhone, iPad or Android device or Security Key.

iPhone, iPad or Android device



Scan the QR code on your computer screen using your phone/tablet and select Use passkey if prompted. Follow the steps on your phone/tablet to complete the passkey setup.

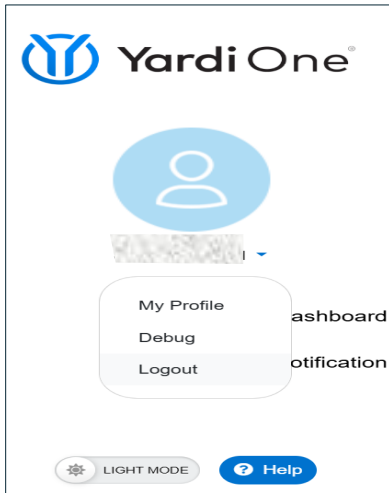
Security Key



Follow the steps on the screen to complete the passkey setup.
You will see a confirmation message when your passkey setup is successful.

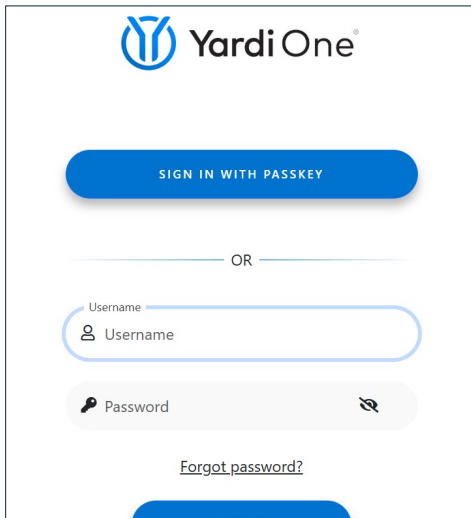
Note: The HUD P260 and HUD Homestore and NAID Portal Help Desks are unable to assist with your cell phone, iPad or Security Key if the process is unsuccessful. You should continue to log in using your username, password, and MFA.

To log out of the Passkey setup link, click the down arrow to the right of your name. Select Logout.

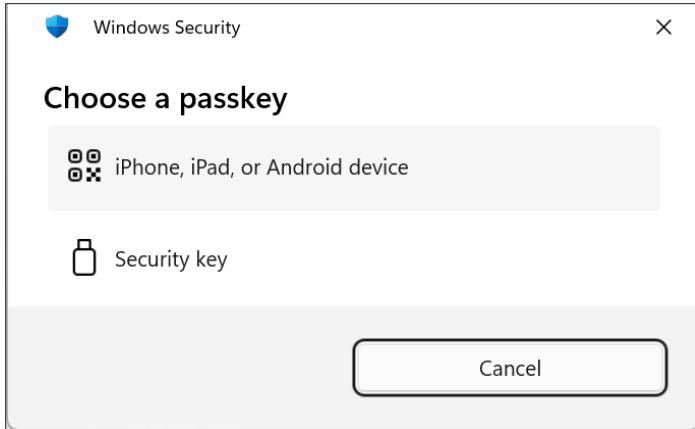


Logging in using the passkey

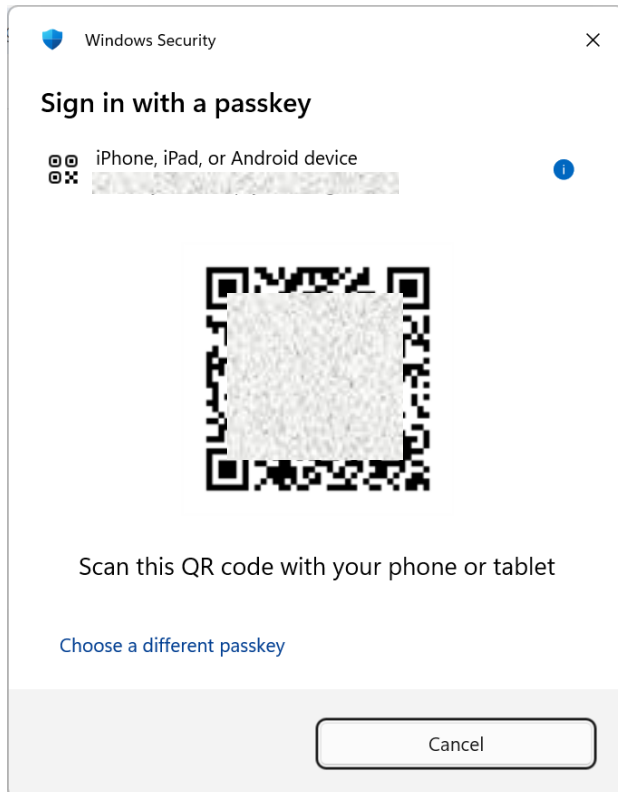
At the YardiOne login screen select



Choose the same passkey option as when you created it.

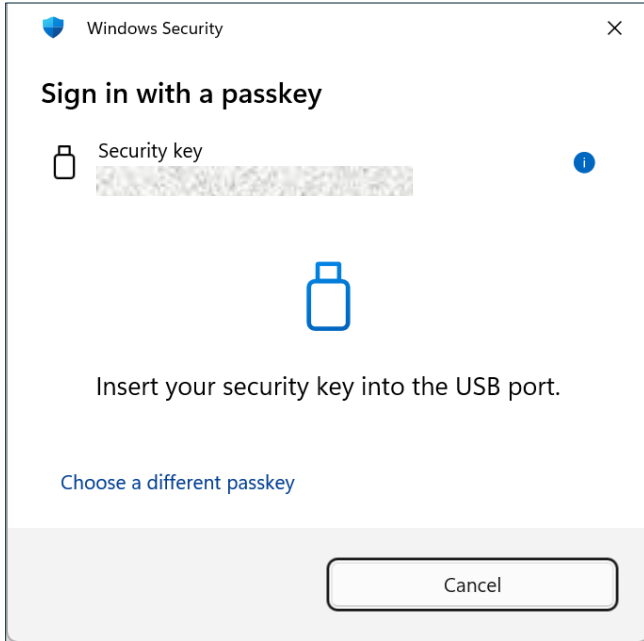


iPhone, iPad or Android device



Continue on your phone/tablet and when successful your system will open.

Security Key



Follow the steps on the screen to complete the passkey login.

Remove a passkey

When logged into the Passkey link select Remove Passkey.

Note: You will also need to remove the passkey from your phone manually.

